

2017

The Learning Center
Dr. Clay Armstrong, Director
Laura Pate, Instructor/Coordinator, LSSP

[LEARNING SKILLS SUPPORT PROGRAM(LSSP) REPORT]

This report, updated annually, is designed to detail the progress of the Learning Skills Support Program and its participants in order to determine its effectiveness. This program is housed in and managed by The Learning Center (TLC).

May 19th, 2017

Purpose and History of the Learning Skills Support Program

The Learning Skills Support Program (LSSP) was created by the Office of the Provost and The Learning Center (TLC) at Mississippi State University (MSU) to provide academic assistance those students who have been placed on academic suspension. This program is offered to suspended students who petition to stay in school and improve their academic performance. It provides an alternative to the university policy which traditionally has required suspended students to stay out of school for one academic semester.

The LSSP is designed to improve the progress of this particular population of students by specifically focusing on their individual obstacles to their academic success. The LSSP at Mississippi State University is structured to provide students with enhanced advising and with the study skills to facilitate better study habits and increase performance and success in college. As participants in the LSSP, students must fulfill the following four main obligations:

- (1) meet with the coordinator of the LSSP in The Learning Center three times a semester;
- (2) meet with their academic advisors twice a semester;
- (3) complete the specified section of LSK 1033: *Fundamentals of Achievement* (3-credit hour) course; and
- (4) maintain a 2.0 GPA or higher for the semester in which they are enrolled in the program in compliance with AOP 12.16.

The LSSP was first made available to students who were suspended at the end of spring 2005 and implemented in fall 2005.

Learning Skills Support Program (LSSP) data

End of Spring 2017 Report

Table 1: Success Rates* of LSSP Participants			
Participation Semesters	No. of LSSP Participants †	No. of Successful Participants	Percentage of Successful Participants
Cohort 1—Fall 2005	60	37	62%
Cohort 2—Spring 2006	59	46	78%
Cohort 3—Fall 2006	120	92	77%
Cohort 4—Spring 2007	100	76	76%
Cohort 5—Fall 2007	160	135	84%
Cohort 6—Spring 2008	84	68	81%
Cohort 7—Fall 2008	195	155	79%
Cohort 8—Spring 2009	149	107	72%
Cohort 9—Fall 2009**	219	165	75%
Cohort 10—Spring 2010	153	126	82%
Cohort 11—Fall 2010**	205	168	82%
Cohort 12—Spring 2011	155	124	80%
Cohort 13—Fall 2011**	222	171	77%
Cohort 14—Spring 2012	175	142	81%
Cohort 15—Fall 2012**	209	159	76%
Cohort 16—Spring 2013	110	80	73%
Cohort 17— Fall 2013**	142	115	81%
Cohort 18—Spring 2014	104	76	73%
Cohort 19 -- Fall 2014**	184	129	70%
Cohort 20 -- Spring 2015	103	83	81%
Cohort 21—Fall 2015**	151	115	76%
Cohort 22—Spring 2016	100	89	89%
Cohort 23--Fall 2016**	137	103	75%
Cohort 24--Spring 2017	101	74	73%
Totals	3397	2635	78%

* Successful students are defined as those who satisfied all requirements of the LSSP and as a result were taken off of academic suspension.

LSSP End of Spring 2017 Report

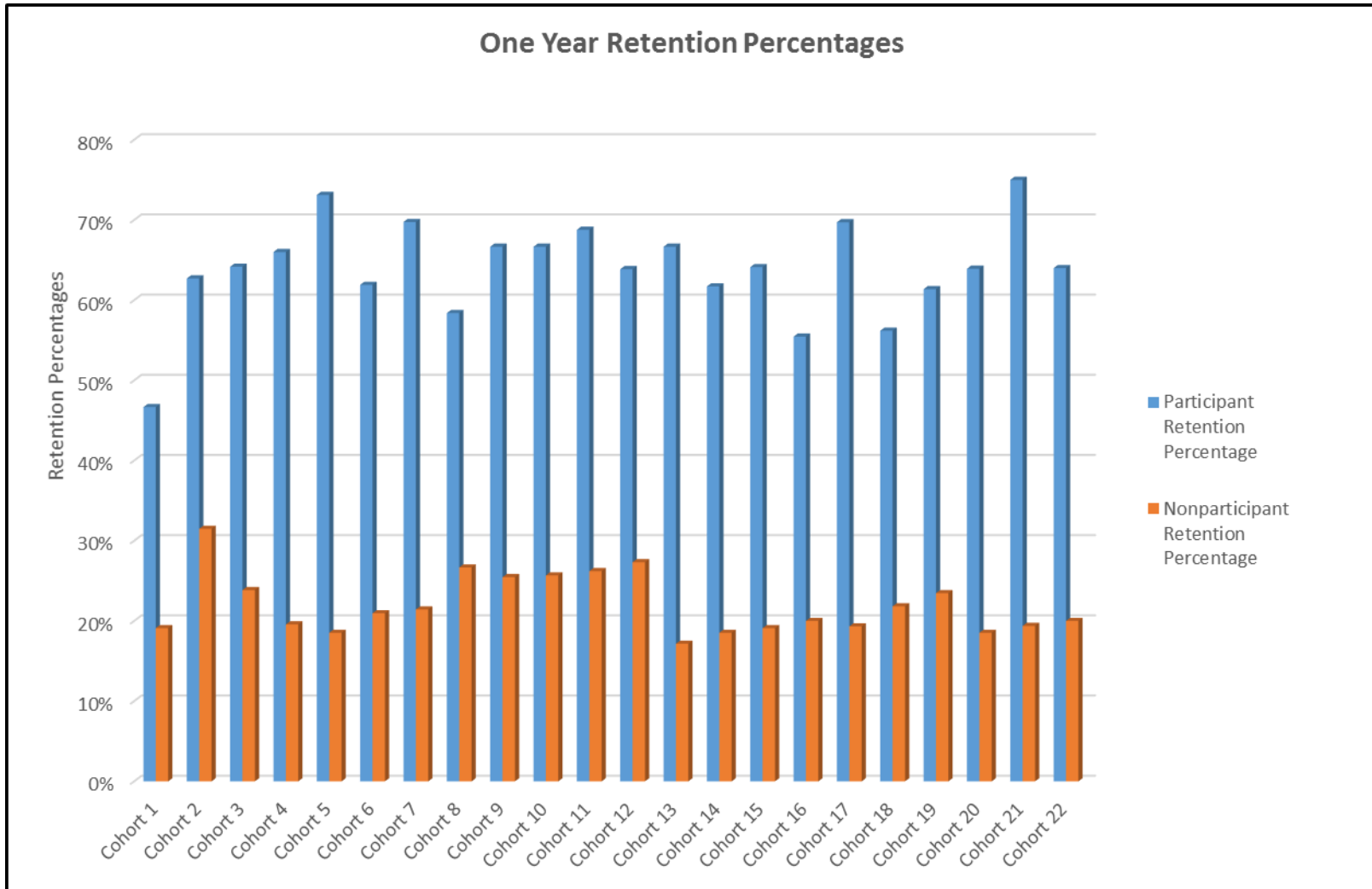
Table 2: Comparison of Students Retained* One Year After Suspension Date

Cohort—Participating Semester	Retention Measured Semester	No. of LSSP Participants	No. of LSSP Participants Retained	Participant Retention Percentage	No. of Nonparticipants	No. of Nonparticipants Retained	Nonparticipant Retention Percentage
Cohort 1—Fall 2005	Spring 2006	60	28	47%	89	17	19%
Cohort 2—Spring 2006	Fall 2006	59	37	63%	54	17	31%
Cohort 3—Fall 2006	Spring 2007	120	77	64%	151	36	24%
Cohort 4—Spring 2007	Fall 2007	100	66	66%	92	18	20%
Cohort 5—Fall 2007	Spring 2008	160	117	73%	162	30	19%
Cohort 6—Spring 2008	Fall 2008	84	52	62%	105	22	21%
Cohort 7—Fall 2008	Spring 2009	195	136	70%	154	33	21%
Cohort 8—Spring 2009	Fall 2009	149	87	58%	135	36	27%
Cohort 9—Fall 2009**	Spring 2010	219	146	67%	216	55	25%
Cohort 10—Spring 2010	Fall 2010	153	102	67%	148	38	26%
Cohort 11—Fall 2010**	Spring 2011	205	141	69%	248	65	26%
Cohort 12—Spring 2011	Fall 2011	155	99	64%	183	50	27%
Cohort 13—Fall 2011**	Spring 2012	222	148	67%	309	53	17%
Cohort 14—Spring 2012	Fall 2012	175	108	62%	189	35	19%
Cohort 15—Fall 2012**	Spring 2013	209	134	64%	288	55	19%
Cohort 16—Spring 2013	Fall 2013	110	61	55%	210	42	20%
Cohort 17— Fall 2013**	Spring 2014	142	99	70%	295	57	19%
Cohort 18—Spring 2014	Fall 2014	105	59	56%	197	43	22%
Cohort 19—Fall 2014	Spring 2015	132	81	61%	341	80	23%
Cohort 20—Spring 2015	Fall 2015	97	62	64%	162	30	19%
Cohort 21—Fall 2015	Spring 2016	156	117	75%	258	50	19%
Cohort 22--Spring 2016	Spring 2017	98	63	64%	148	29	20%
Totals		3105	2020	65%	4134	891	22%

*Retention is defined as having completed the semester following the suspension period.

** **Includes** students that took LSK 1033 in Summer or Fall term and satisfied all requirements of the LSSP. **Does not include** students who participated in summer section but either withdrew or did not enroll in the fall term, thus not completing all requirements of the LSSP.

LSSP End of Spring 2017 Report

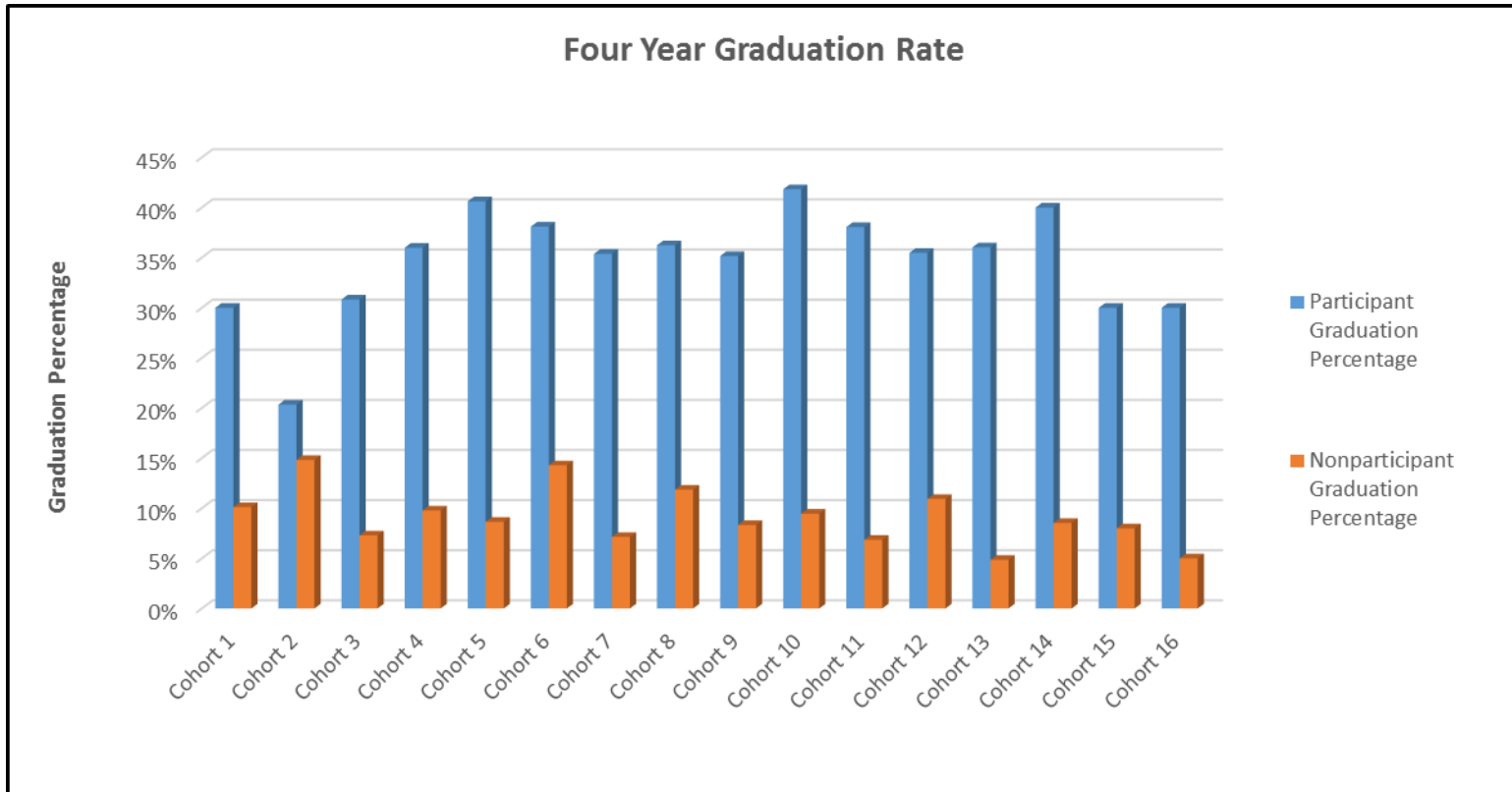


LSSP End of Spring 2017 Report

Table 3: Comparison of Student Four Year Graduation Rate*						
Cohort—Participation Semester	No. of LSSP Participants	No. of LSSP Participants Graduated	Participant Graduation Percentage	No. of Nonparticipants	No. of Nonparticipants Graduated	Nonparticipant Graduation Percentage
Cohort 1—Fall 2005	60	18	30%	89	9	10%
Cohort 2—Spring 2006	59	12	20%	54	8	15%
Cohort 3—Fall 2006	120	37	31%	151	11	7%
Cohort 4—Spring 2007	100	36	36%	92	9	10%
Cohort 5—Fall 2007	160	65	41%	162	14	9%
Cohort 6—Spring 2008	84	32	38%	105	15	14%
Cohort 7—Fall 2008	195	69	35%	154	11	7%
Cohort 8—Spring 2009	149	54	36%	135	16	12%
Cohort 9—Fall 2009	219	77	35%	216	18	8%
Cohort 10—Spring 2010	153	64	42%	148	14	9%
Cohort 11—Fall 2010	205	78	38%	248	17	7%
Cohort 12—Spring 2011	155	55	35%	183	20	11%
Cohort 13—Fall 2011	222	80	36%	309	15	5%
Cohort 14- Spring 2012	175	70	40%	164	14	9%
Cohort 15--Fall 2012	272	81	30%	239	19	8%
Cohort 16--Spring 2013	138	41	30%	168	8	5%
Totals	2466	869	35%	2617	218	8%

* Four Year Graduation Rate is determined after a 4 year period beginning with the LSSP participation semester.

LSSP End of Spring 2017 Report



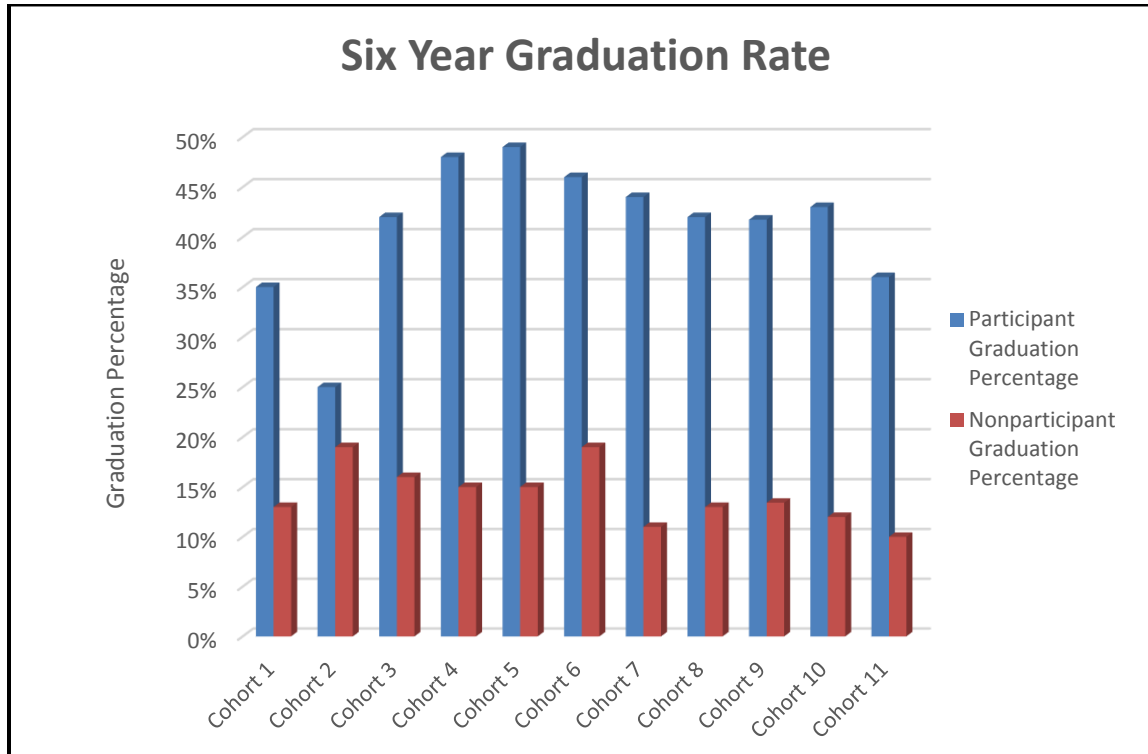
LSSP End of Spring 2017 Report

Table 4: Comparison of Student Six Year Graduation Rate*

Cohort—Participation Semester	No. of LSSP Participants	No. of LSSP Participants Graduated	Participant Graduation Percentage	No. of Nonparticipants	No. of Nonparticipants Graduated	Nonparticipant Graduation Percentage
Cohort 1—Fall 2005	60	21	35%	89	12	13%
Cohort 2—Spring 2006	59	15	25%	54	10	19%
Cohort 3—Fall 2006	120	50	42%	151	24	16%
Cohort 4—Spring 2007	100	48	48%	92	14	15%
Cohort 5—Fall 2007	160	78	49%	162	25	15%
Cohort 6—Spring 2008	84	39	46%	105	20	19%
Cohort 7—Fall 2008	195	86	44%	154	17	11%
Cohort 8—Spring 2009	149	62	42%	135	17	13%
Cohort 9—Fall 2009	230	96	42%	216	29	13%
Cohort 10--Spring 2010	187	80	43%	124	15	12%
Cohort 11--Fall 2010	285	102	36%	156	15	10%
Totals	1629	677	42%	1438	198	14%

* Six Year Graduation Rate is determined after a 6 year period beginning with the LSSP participation semester.

LSSP End of Spring 2017 Report



LSSP End of Spring 2017 Report

